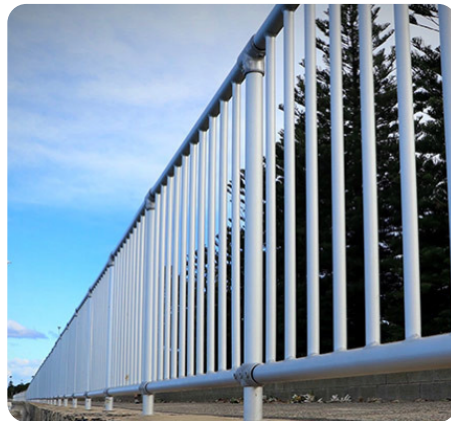
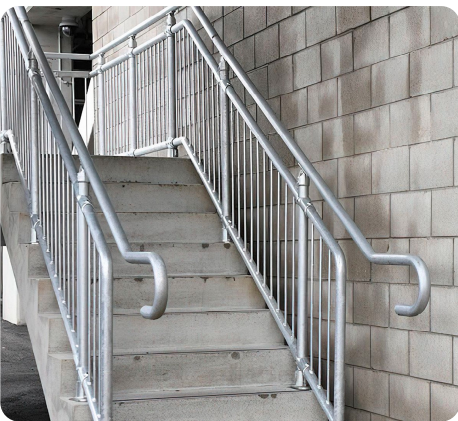




STVS MODULAR HANDRAIL SYSTEMS



SMART MODULAR DESIGN

- STVS Modular handrail systems are assembled via a simple, no-weld construction method, reducing risk for corrosion, easy maintenance.
- Offering the lowest cost of product in lifetime. STVS Modular hot dip galvanized system gives 10 years anti corrosion warranty.
- Nice appearance with mandrel bending but not elbow welding

SAFETY AND COMPLIANCE

- No weld means no hot work permits, toxic fumes or site shutdown.
- Quality standardize and no dependence on welder skill on site.
- We design, manufacture and tested our components fully compliant BS ISO 12911-2.

LESS TIME ON SITE

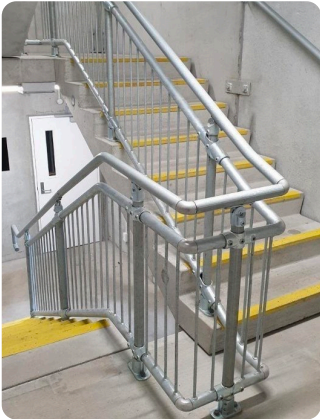
- All systems designed for modular assembly and rapid, streamlined onsite installation.
- Our design eliminate the risk in 3Ds drawing and arrange the packing phase by phase so your installer can find the parts and install easily.



MODULAR

Ha Duy Phien St | 70000 Ho Chi Minh City | Vietnam
 Hotline: +84 938 770 765 | quyet.le@stvs.co | stvs.co

APPLICATION



EXIT STAIRCASE



INDUSTRIAL STAIRCASE
HANDRAIL



MEZANINE HANDRAIL



WALK WAY HANRAIL



WATER TREATMENT HANDRAIL



RIVER/LAKE HANDRAIL



PLATFORM HANDRAIL



PAKING AREA



ROOF HANDRAIL

TESTED HANDRAIL SYSTEMS

DESIGN & TESTED EXCEEDS 150 KG FORCE AT ANY DIRECTION



FOCUS PULL 200 KG INTO MIDDLE OF TOP RAIL WITHIN 2 MINUTES



**PULL 150 KG INTO MIDDLE POST
RESULT NO CHANGE SHAPE**



Test Report No. VNHL1907012485HG Date: August 23, 2019 Page 1 of 6

STVS CO., LTD

37 HOA MAI, WARD 2, PHU NHUAN DISTRICT, HO CHI MINH CITY, VIETNAM

The following sample(s) was/were submitted and identified by the client as:

SGS Job No. : VNHL1907012485HG

Sample Description : ASSEMBLY HANDRAIL "(LAN CAN LAP RAP)"

Color : "MA KEM" (GALVANIZED)

Characteristic : "THEP MA KEM NHUNG NONG"

Style / Item No. : CP32HB3P0G0

Date of Production : 06/2019

Manufacturer : STVS CO., LTD

Buyer : STVS CO., LTD

Country of Origin : VIET NAM

Country of Destination : WORLD WIDE

Other Information : ASSEMBLY HANDRAIL
PIPE DIMENSION: 42.2x3.2mm
POST CENTRE DISTANT: 1500mm
HEIGHT: 1050mm
HORIZONTAL BARS QUANTITY: 2 BARS
ANCHOR BOLT: M12-100
FINISHING: HOT DIP GALVANIZED
MANUFACTURE: STVS CO., LTD

Sample Receiving Date : JULY 29, 2019

Final confirmed Date : JULY 29, 2019

Testing Period : JULY 29, 2019 TO AUGUST 05, 2019

Test Requested : SELECTED TEST (S) AS REQUESTED BY CLIENT.

Test Results : PLEASE REFER TO NEXT PAGE(S).

This document is issued by the Company subject to its General Conditions of Service printed overleaf, available on request or accessible at <http://www.sgs.com/en/Terms-and-Conditions.aspx> and, for electronic format documents, subject to Terms and Conditions for Electronic Documents at <http://www.sgs.com/en/Terms-and-Conditions/Terms-e-Documents.aspx>.

Attention is drawn to the limitations of liability, indemnification and jurisdiction issues defined therein. Any holder of this document is advised that information contained hereon reflects the Company's findings at the time of its intervention only and within the limits of Client's instructions, if any. The Company's sole responsibility is to its Client and this document does not exonerate parties to a transaction from exercising all their rights and obligations under the transaction documents. This document cannot be reproduced except in full, without prior written approval of the Company. Any unauthorized alteration, forgery or falsification of the content or appearance of this document is unlawful and offenders may be prosecuted to the fullest extent of the law.

Unless otherwise stated the results shown in this test report refer only to the sample(s) tested and such sample(s) are retained for 90 days only.

SGS Vietnam Ltd Office: 198 Nguyen Thi Minh Khai St, District 3, Ho Chi Minh City, Vietnam | (84-29) 3935 1920 | (84-29) 3935 1921 www.sgs.com
Lab: Lot III/21, 19/5A St, Industrial Group III, Tan Binh IZ, Tan Phu District, HCMC, S.R. Vietnam | (84-28) 3816 0999 | (84-28) 3816 0996

Member of the SGS Group (SGS SA)



Test Report No. VNHL1907012485HG Date: August 23, 2019 Page 2 of 6

Signed for and on behalf of
SGS Vietnam LTD



Wong Cho Wing
Hardline and E&E Lab Manager

This document is issued by the Company subject to its General Conditions of Service printed overleaf, available on request or accessible at <http://www.sgs.com/en/Terms-and-Conditions.aspx> and, for electronic format documents, subject to Terms and Conditions for Electronic Documents at <http://www.sgs.com/en/Terms-and-Conditions/Terms-e-Documents.aspx>.

Attention is drawn to the limitations of liability, indemnification and jurisdiction issues defined therein. Any holder of this document is advised that information contained hereon reflects the Company's findings at the time of its intervention only and within the limits of Client's instructions, if any. The Company's sole responsibility is to its Client and this document does not exonerate parties to a transaction from exercising all their rights and obligations under the transaction documents. This document cannot be reproduced except in full, without prior written approval of the Company. Any unauthorized alteration, forgery or falsification of the content or appearance of this document is unlawful and offenders may be prosecuted to the fullest extent of the law.

Unless otherwise stated the results shown in this test report refer only to the sample(s) tested and such sample(s) are retained for 90 days only.

SGS Vietnam Ltd Office: 198 Nguyen Thi Minh Khai St, District 3, Ho Chi Minh City, Vietnam | (84-29) 3935 1920 | (84-29) 3935 1921 www.sgs.com
Lab: Lot III/21, 19/5A St, Industrial Group III, Tan Binh IZ, Tan Phu District, HCMC, S.R. Vietnam | (84-28) 3816 0999 | (84-28) 3816 0996

Member of the SGS Group (SGS SA)



MODULAR

Ha Duy Phien St | 700000 Ho Chi Minh City | Vietnam
Hotline: +84 938 770 765 | quyet.le@stvs.co | stvs.co

TECHNICAL SPECIFICATION

Material:

- Clamp fitting: Duction iron
- Tube: Steel tube according to ASTM A500 or BS 1387 standard
- Flange: SS400 or ASTM A36 standard
- Toe plate: Refer to Banana Stem toe plate systems
- Bolt: Steel

Dimension:

2 HORIZONTAL BARS – 2HB	3 HORIZONTAL BARS – 3HB
Condition: Keep spacing = $\leq 500\text{mm}$	More safe for handrail

- Clamp fitting: Average thickness 5mm
- Locking set screw: M16-12
- Height: 1100mm
- Post distant: Max 1500mm
- Post section: D42.2x3.2mm
- Vertical bar section: D42.2x2.0 mm – Quantity: 1/2/3/4 bars
- Flange: 75x145x8mm (On steel mount)
100x100x8mm (on concrete mount only)
120x120x8mm
- Connection bolts: On steel mount: Bolt set M12-50-8.8
On concrete mount: Expansion anchor bolt M12-100
- Toe plate: 104mm height x 14mm thickness

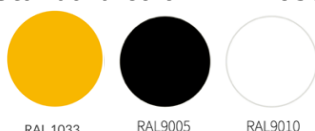
Finishing:

Type of finishing:

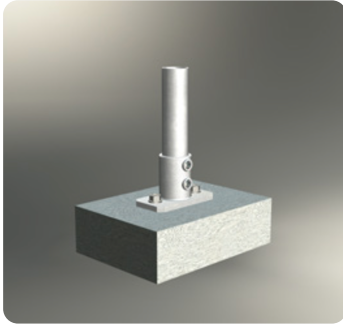
- G0: Polyester powder coating paint on mild steel
- G1: Polyester powder coating paint on galvanized steel.
- G2: Hot dip galvanized finishing
- G3: Hot dip galvanized finishing + Polyester powder coating paint

*Noted: Paint thickness 110 micrometer, Tolerance of thickness +/-10%
Toe plate only powder coating finish on aluminum material*

Color: Standard color RAL 1033 - (Other optional on request)

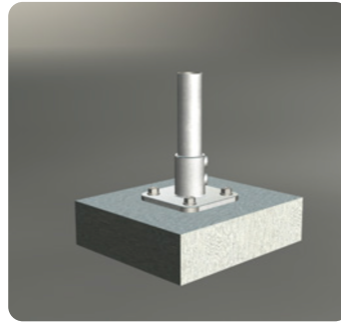


Configuration:



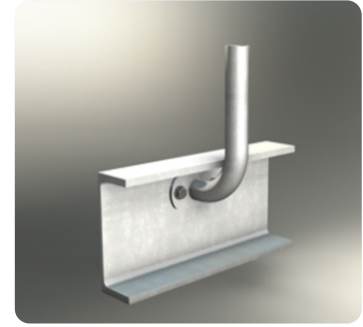
TOP MOUNT 1 (TM1)

Connect to the top of the mount by 2 bolts



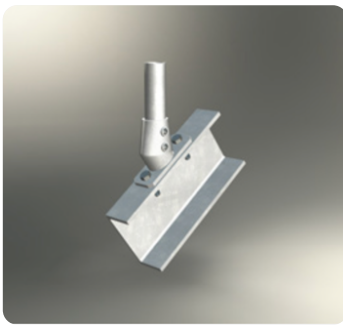
TOP MOUNT 2 (TM2)

Connect to the top of the mount by 4 bolts



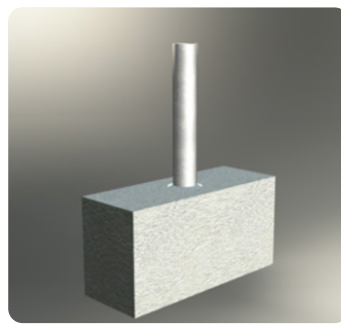
SIDE MOUNT 1 (SM1)

Connect to the side of the steel C beam by 2 bolt set



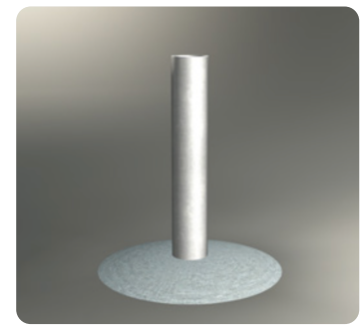
ANGLE MOUNT 1 (AM1)

Connect to the top slope mount



BURIED MOUNT 1 (BM1)

Buried in to concrete with the deep 200mm



BURIED MOUNT 2 (BM2)

Buried in to the ground with deep 500mm.

WARRANTY:

STVS MODULAR WARRANTY MATRIX – MODULAR HANDRAIL

PAINTING SPECIFICATION		C1	C2	C3	C4	C5	C5M
		Temperate low pollution Countryside. IN HOUSE	Temperate low pollution Countryside. >20Km from sea side	Urban and industrial atmospheres, moderate pollution or low salinity. >20Km from sea side	Industrial areas or coastal areas with moderate salinity. From 3 to 20 Km from seaside	Industrial, high humidity, aggressive atmosphere. From 0.5 to 3 Km from seaside	Coastal and offshore areas with high salinity. Less than 0.5 Km from seaside
FINISHING TYPE							
MODULAR HANDRAIL <i>Tolerances for the anti-corrosion guarantee are defined based on ISO 4628-3 for the degree of rusting grade and ISO 4628-2 for the degree of blistering.</i>	G0	5	5*	5*	N/A	N/A	N/A
	G1	5	5	5	3	N/A	N/A
	G2	10	10	10	10	5	N/A
	G3	10	10	10	10	5	5

Noted:

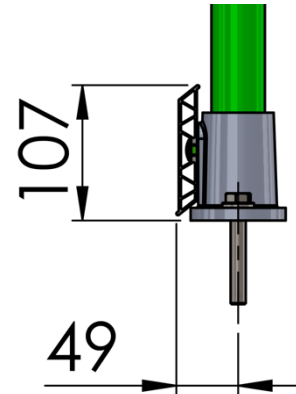
* Apply for inhouse application only

BANANA STEM TOE PLATE® SYSTEMS

STVS unique aluminum toeplate design. This design follow BS-EN ISO 14122 standard.

Extract: 7.1.7 A toe-plate with a minimum up stand of 100 mm shall be placed 10 mm maximum from the walking level and the edge of the platform.

The idea from banana stem structure give super strong toeplate also allows quick and easy installation. No drilling or welding, the structure allows for secure attachment with no exposed fasteners. Banana stem structure provides rigid non-buckling performance with the benefit of light weight, easy handling.



PRODUCT SPECIFICATION:

Dimension:	14mm thickness x 102mm height
Material:	Aluminum 6063 standard
Finishing:	Powder coating in silver color (Yellow color available onn request)

ALUMINUM PLATE	CONNECTOR
	
<p>Huge advantage compared to the steel toe plate – lighter, stronger, much more beautiful and corrosion resistant.</p>	<p>The connector is flexible to install without tolerance worry. Hot dip galvanized finishing give high corrosion resistant ability</p>
<p>DURABLE - STRONGER – LIGHTER – EASY TO INSTALL</p>	