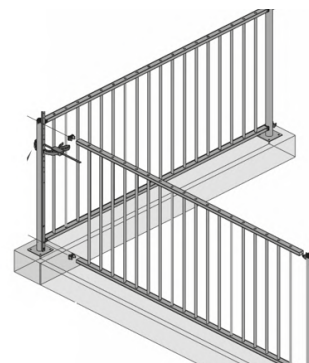
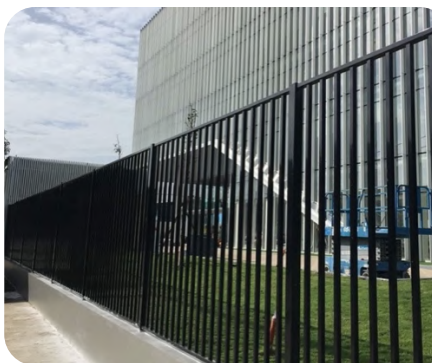
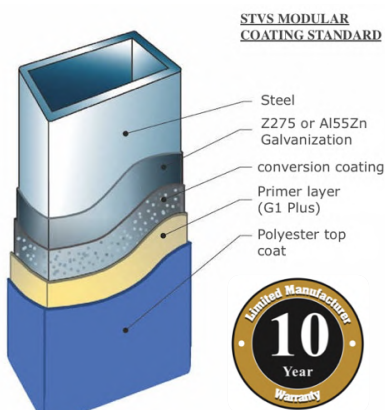




ASTRA PLUS RAILING FENCE



DURABLE

- o STVS Modular with professional coating know-how give 10 years corrosion warranty.
- o Almost no maintenance needed. At least double lower cost using compare traditional welding products.
- o Impossible to remove the panel once installed.

BEAUTIFUL

- o High-end and elegant appearance that enhance the beauty of the site.
- o UV resistant keep color.
- o Hidden connector option give strong and smooth appearance .

EASY TO INSTALL

- o Modular design that allow easy & quick installation
- o Applicable for all types of configurations: Curves, Corners, Slopes, on walls... with the same standard products.

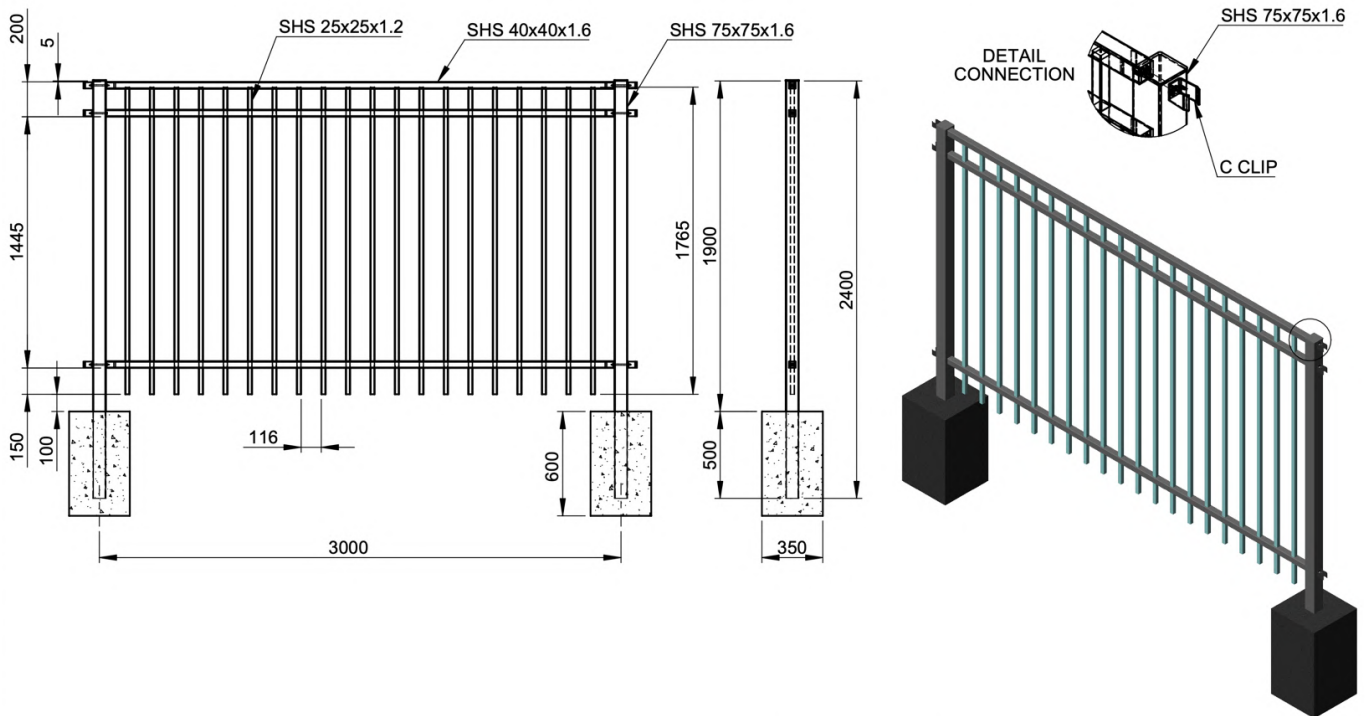


M O D U L A R

Ha Duy Phien St | 70000 Ho Chi Minh City | Vietnam
 Hotline: +84 938 770 765 | quyet.le@stvs.co | stvs.co

TECHNICAL SPECIFICATION:

TYPICAL DRAWING:



MATERIAL SURFACE:
WELDING TYPE:
PAINTING PROCESS:
FINISHING:

Pregalvanized steel Z275 (120g/m²/side) or Al55Zn Silicon Bronze.

Full automatic coating process

- STVS Modular standard with InterPon Polyester powder coating, exhibits a tougher cured film which provides superior damage resistance to packaging materials. It is designed to give excellent long term exterior durability and colour retenti. (G1)

Film thickness: 80-120 microment thickness

- For highly corrosion environment as C5, C5X, an epoxy primer layer need to be appllied under the top coat layer to enhance corrosion protection ability of the coating. (G1 Plus)

PANEL:

- o Panel height: 1800mm or 1440mm as standard
Other dimension made to order
- o Panel width: 2925 mm as standard
2100 mm incase panel height > 2100mm
- o Vertical bars section: 25x25x1.2 mm or D26x1.2 mm as standard
- o Vertical bar distant: 114 mm
- o Horizontal bar section: 40x40x1.6 mm
- o Horizontal bar quantity: 2 or 3 bars

POST:

- o Post section: 75x75x1.6 mm
- o Post spacing: 3000 mm as standard
2175 mm incase panel height > 2100mm
- o Post connection: Inner connection or Outer connection type



- o Flange (if need): 150x150x6 mm, flange use 4 wedge anchor bolt M12-100 with black pastic cap protect the top of the bolt.
In case use flange, the flanger must be hot dip galvanized before welding, and the welding technical use broze silicon to protect corrosion

❖ ASTRA PLUS RAILING WARRANTY MATRIX:

PAINTING SPECIFICATION		C2	C3	C4	C5	CX
<u>ASTRA PLUS FENCE</u>	G1	10	10	10	N/A	N/A
<i>Tolerances for the anti-corrosion guarantee are defined based on ISO 4628-3 for the degree of rusting grade and ISO 4628-2 for the degree of blistering.</i>	G1 Plus	10	10	10	10	2

Noted:

**The anti-corrosion guarantee covers rust-related faults. It is based on the European standard ISO 12944, which defines precise corrosivity categories*

STVS reserves the right to make product changes without prior notice. We do not accept any responsibility for mistakes, inaccuracies and/or printing errors.