



JUPITER CANTILEVER SLIDING GATE

KEY FEATURES:

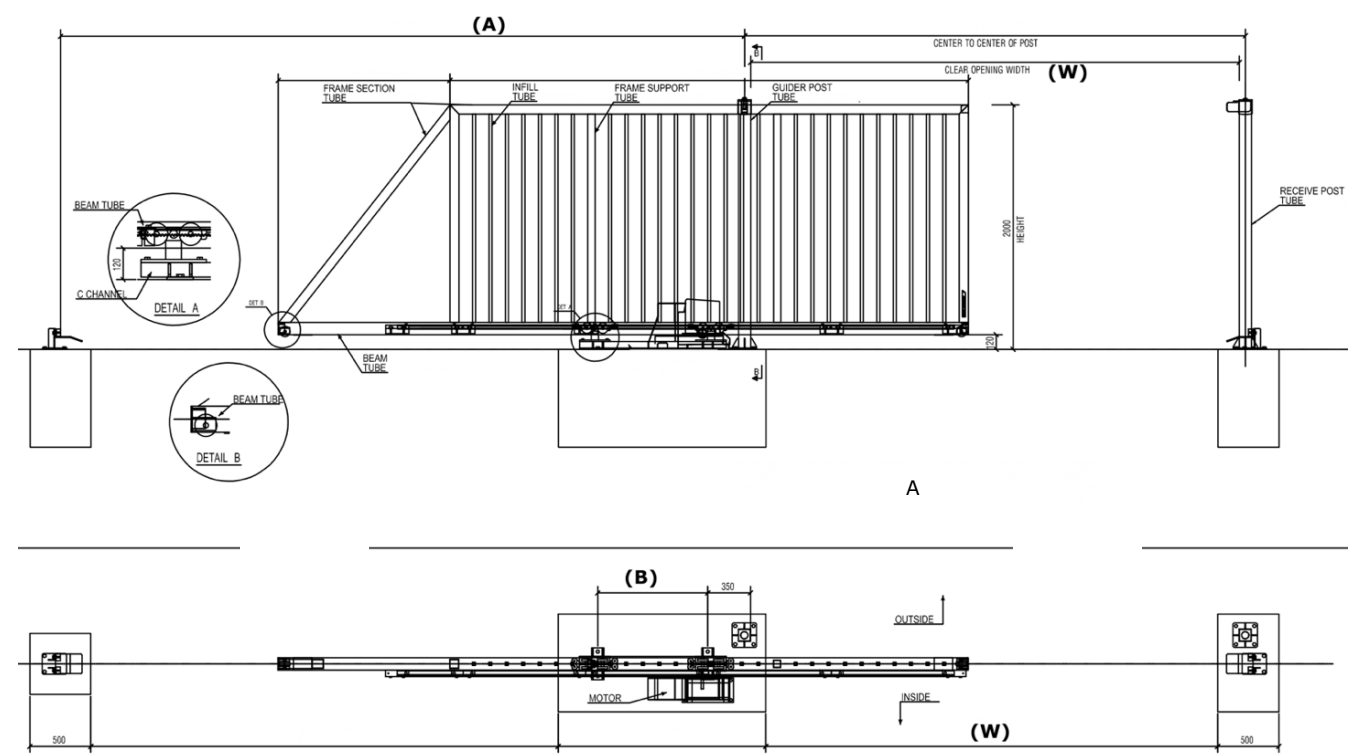
- Modern and luxury design that enhances the beauty of the site.
- Heavy and strong gate structure makes the gate strong and stable commissioning in long term.
- Extremely smooth, low noise and durability.
- Gate surfaces are extremely robust with high quality galvanized or high quality architecture grade finish.
- Pre-wiring and tests performed in-factory.



TECHNICAL SPECIFICATION

RANGE: JUPITER CANTILEVEER SLIDING GATE

Dimension:

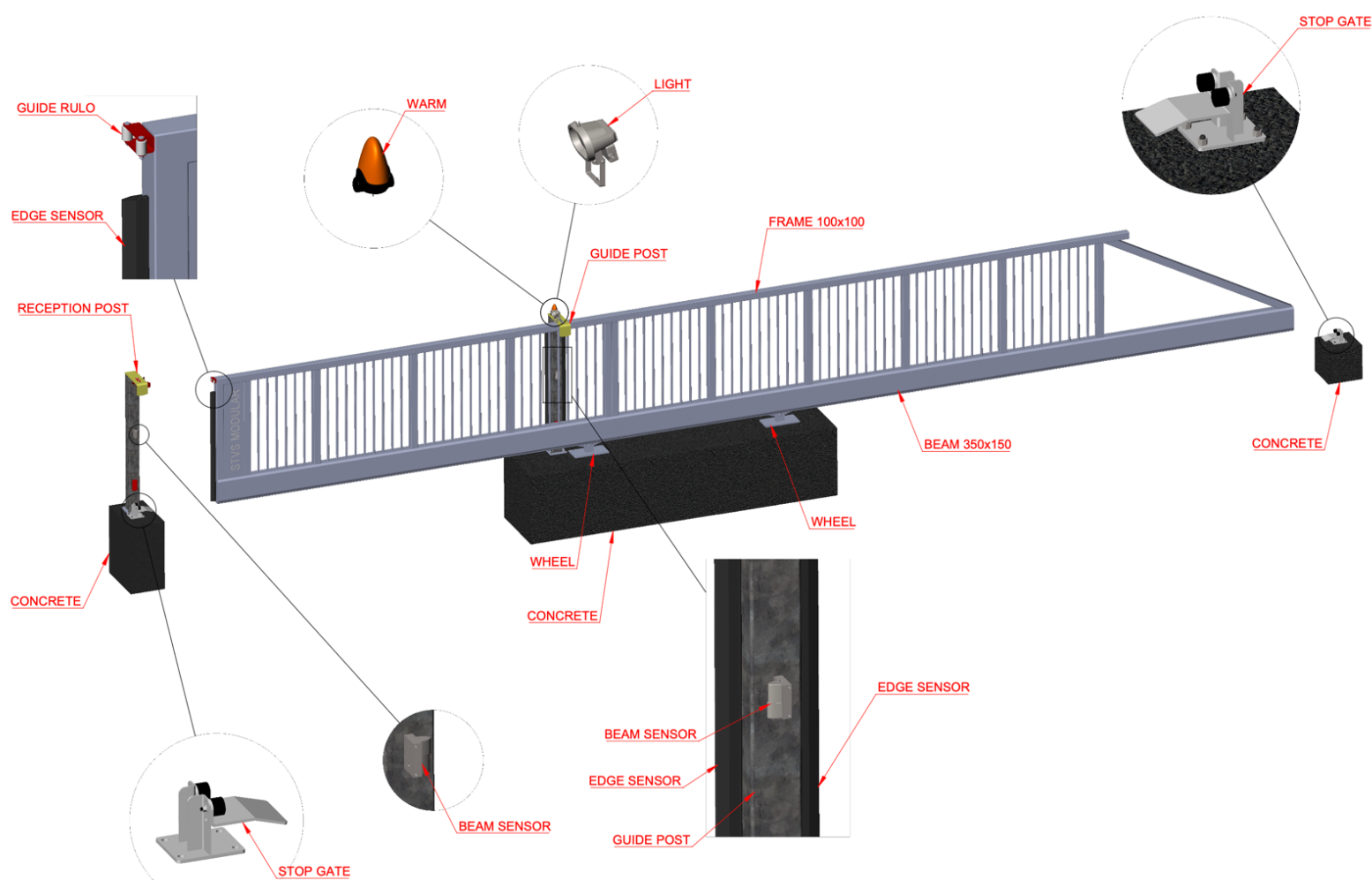


Nominal Passage (mm)	3000	4000	5000	6000
Leaf length (mm)	5200	6000	7400	95000
Beam (mm)	150x150			
Frame (mm)	75x75			
Guiding post (mm)	Single steel post - 100x100			
Max. Cycles/day	150			
Material	Steel			
Finishing	Option 1: Polyester powder coating 2 layer - G1 Plus (Max. NH =2.2m) Option 2: Liquid paint: STVS Marine coating			
Control	Wall transmitter as standard Optional: Remote, push bottom			
Safety:	Optional safety standard according to EN 60950-1 including: Infrared sensor, touch sensor, alarm light			
Warranty:	10 years corrosion protection for structure (refer warranty table for details) 2 years or 100.000 cycles for motor			



M O D U L A R

Ha Duy Phien St | 700000 Ho Chi Minh City| Vietnam
Hotline: +84 938 770 765 | quyet.le@stvs.co | stvs.co



ATHENA CANTILEVER SLIDING GATE

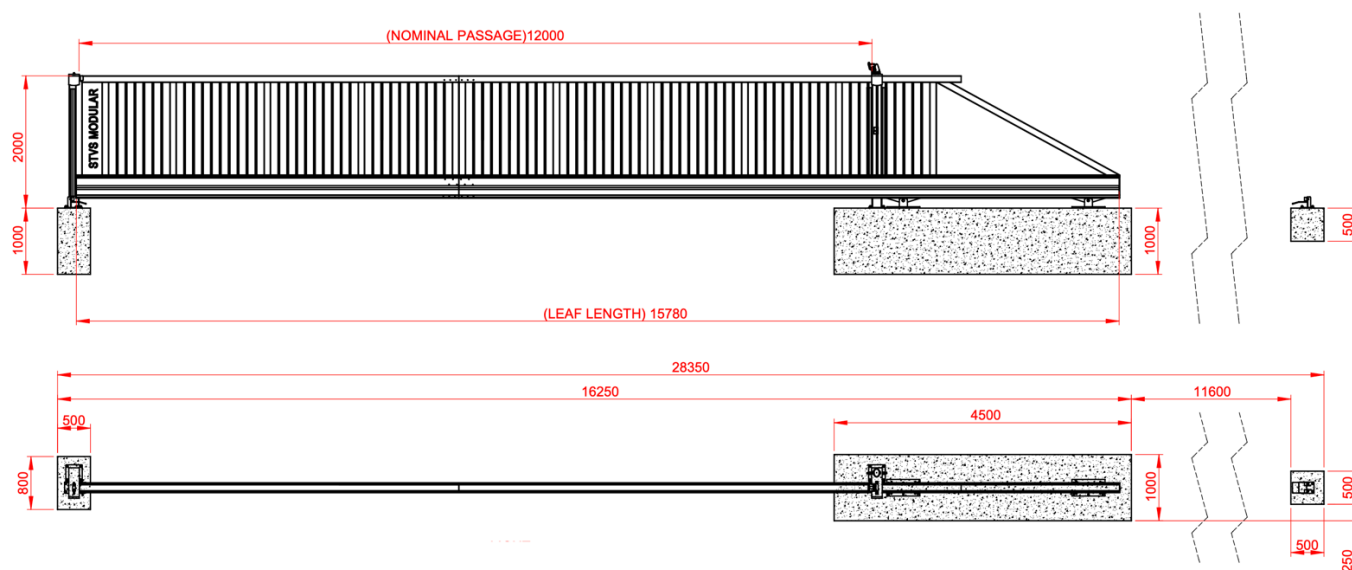
This single or double leaf sliding gate boasts the latest technology with such smooth and stable operation. The gate frame is the combination between steel and high quality aluminum alloy by Japan technology enhance both the gate strength and durability . Available in a wide range of widths from 3 -14m and heights from 1-2.2m.

The gate with Key features:

- ❖ Modern and luxury design. High quality finishing that enhance the beauty of the site.
- ❖ STVS Modular with high quality aluminum alloy material for the gate frame with mechanical characteristic same as steel (the tensile strength 240 N/m²),
- ❖ The aluminum alloy material with the same mechanical characteristic as steel, but the weight is lighter 300%, .As a result, track rollers and support rollers as well as the motor drive are exposed to a significantly lower load. This lead to the gate more durable over the time.
- ❖ Smooth, clean surface structure of aluminium facilitates a high-quality powder coat finish.
- ❖ Gate surfaces are extremely robust with high quality architecture coating.
- ❖ 10 years corrosion warranty for coating on aluminum.
- ❖ 2 Years or 100.000 cycles for motor at 12mW, 58.000 circles for opening from 12-14mW
- ❖ Pre-wiring and tests performed in-factory.
- ❖ Average speed 12m/minute

TECHNICAL SPECIFICATION

RANGE: ATHENA CANTILEVER SLIDING GATE

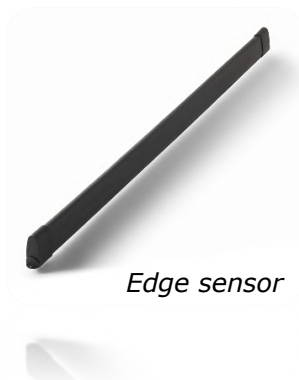


Nominal Passage (mm)	7000	8000	9000	10000	11000	12000	13000	14000
Leaf length (mm)	9000	10500	11600	13500	15000	16000	16800	18500
Beam section (mm)	150x250						150x350	
Frame section (mm)	100x100							
Diagonal bracer	No						Yes	
Guiding post section (mm)	Single steel post - 150x150						2x Double steel post - 100x100	
Max. Cycles/day	150						80	
Finishing	Option 1: Polyester powder coating 2 layer - G1 Plus (Max. NH =2.2m) Option 2: Liquid paint: Epoxy primer + Polyurethan topcoat							
Control	Wall transmitter as standard Optional: Remote, push bottom							
WARRANTY	10 years corrosion protection for structure							
	2 years or 100.000 cycles for motor						2 years or 58.000 cycles for motor	

SAFETY DEVICE



Alarm light



Edge sensor



Beam sensor

CONTROL DEVICE



Wall transmitter

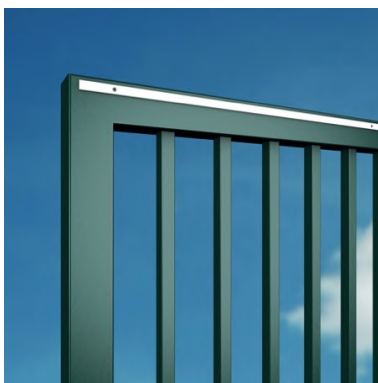


Remote

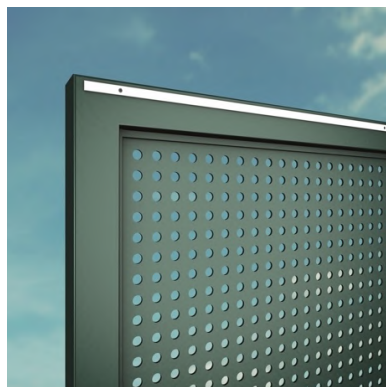


Push bottom

INFILL OPTION



*Square 25x25 (STD)
Square 30x30*



Perforated sheet

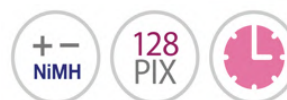


*Wire mesh
Mesh 80x250
Wire 6x5x6*

** Other infill request made to order*

MOTOR DRIVEN

- **Motor controlled by magnetic encoder**
- **Graphic LCD display**
- **Motor speed average 8-12m/min for gate size up to 12mW**
- **Load 1500 Kg or 3000 Kg**
- **Slows at the start and end of the cycle (smooth jolt-free operation) enhance safety**
- **Not affected by adverse weather conditions**
- **24 VDC backup battery ensures continued operation in the event of a supply failure**
- **Lifetime lubrication**
- **Includes set of cells for lightweight vehicles**



The automation is made up of a self-locking gear motor controlled by magnetic encoder with an in-built:

- Electronic programmer;
- 433MHz FM receiver;
- slot-in battery charger;
- NiMH batteries.



MANUAL RELEASE SLX3024CB



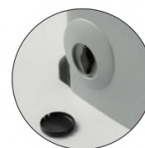
SELF-PROGRAMMING MONITORED BY AN LCD GRAPHICS DISPLAY



MANUAL RELEASE SLX1524CB



MANUAL RELEASE SLX24DRACO



MANUAL RELEASE SL524

The electronic programmer is factory fitted with a graphic LCD display (128 x 128 pixels) with backlighting in six different languages. The menu allows you to rapidly set the system parameters including: the sequential button mode, automatic reclosing, warning lamp pre-flashing, intermittent warning lamp activation, indicator light and photoelectric cell function setting etc.

The electronics card, thanks to the presence of the real-time clock, allows you to set 10 events (shown on the display) and these events permit you to regulate the opening and closing of the motor at different times during the day within 3 weekly time bands (Mon- Fri, Sat-Sun, Mon-Sun); the events can be enabled or disabled (during holiday periods) either from the menu or by means of a radio channel. The appliance is fitted with a safe and secure manual release system activated by a personalised key.