



STVS MODULAR HANDRAIL SYSTEMS

COST EFFICIENT AND EASY MAINTENANCE

- ❖ Easy maintenance, no site shutdown require for maintenance.
- ❖ Offering the lowest cost of product in lifetime.
- ❖ Compact packing.
- ❖ High quality finishing inside factory, reducing risk of corrosion.



SAFETY AND COMPLIANCE

- ❖ Quality standalize
- ❖ No dependence on welder skill on site.
- ❖ STVS Modular is tested systems.



LESS TIME ON SITE

- ❖ Simple, no-weld, no site hot work.
- ❖ Modular assembly and rapid, streamlined onsite installation.
- ❖ Absorb the tolerance on site condition



APPLICATION



STAIRCASE HANDRAIL



WATER TREATMENT AREAS



ROOF HANDRAIL



PARKING AREAS



WALK WAY



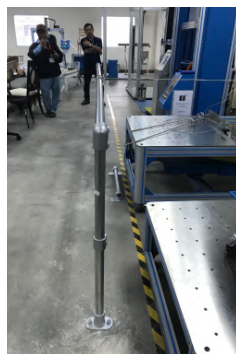
PLATFORM & MEZANINE

TESTED HANDRAIL SYSTEMS

DESIGN & TESTED EXCEEDS BS ISO 14122-3 STANDARD



FOCUS PULL 200 KG INTO MIDDLE OF TOP RAIL WITHIN 2 MINUTES



**PULL 150 KG INTO MIDDLE POST
RESULT NO CHANGE SHAPE**



Test Report No. VNHL1907012485HG Date: August 23, 2019 Page 1 of 6

STVS CO., LTD

37 HOA MAI, WARD 2, PHU NHUAN DISTRICT, HO CHI MINH CITY, VIETNAM

The following sample(s) was/were submitted and identified by the client as:

SGS Job No. : VNHL1907012485HG
Sample Description : ASSEMBLY HANDRAIL "(LAN CAN LAP RAP)"
Color : "MA KEM" (GALVANIZED)
Characteristic : "THEP MA KEM NHUNG NONG"
Style / Item No. : CP32HB3P0G0
Date of Production : 06/2019
Manufacturer : STVS CO., LTD
Buyer : STVS CO., LTD
Country of Origin : VIET NAM
Country of Destination : WORLD WIDE
Other Information : ASSEMBLY HANDRAIL
PIPE DIMENSION: 42.2x3.2mm
POST CENTRE DISTANT: 1500mm
HEIGHT: 1050mm
HORIZONTAL BARS QUANTITY: 2 BARS
ANCHOR BOLT: M12-100
FINISHING: HOT DIP GALVANIZED
MANUFACTURE: STVS CO., LTD
Sample Receiving Date : JULY 29, 2019
Final confirmed Date : JULY 29, 2019
Testing Period : JULY 29, 2019 TO AUGUST 05, 2019
Test Requested : SELECTED TEST (S) AS REQUESTED BY CLIENT.
Test Results : PLEASE REFER TO NEXT PAGE(S).

This document is issued by the Company subject to its General Conditions of Service printed overleaf, available on request or accessible at <http://www.sgs.com/en/Terms-and-Conditions.aspx> and, for electronic format documents, subject to Terms and Conditions for Electronic Documents at <http://www.sgs.com/en/Terms-and-Conditions/Terms-and-Conditions.aspx>

Attention is drawn to the limitations of liability, indemnification and jurisdiction issues defined therein. Any holder of this document is advised that information contained hereon reflects the Company's findings at the time of its intervention only and within the limits of Client's instructions, if any. The Company's sole responsibility is to its Client and this document does not exonerate parties to a transaction from exercising all their rights and obligations under the transaction documents. This document cannot be reproduced except in full, without prior written approval of the Company. Any unauthorized alteration, forgery or falsification of the content or appearance of this document is unlawful and offenders may be prosecuted to the fullest extent of the law.

Unless otherwise stated the results shown in this test report refer only to the sample(s) tested and such sample(s) are retained for 90 days only.

SGS Vietnam Ltd | Office: 198 Nguyen Thi Minh Khai St, District 3, Ho Chi Minh City, Vietnam | (84-28) 3935 1920 | (84-28) 3935 1921 | www.sgs.com
Lab: Lot III/21, 19/5A St, Industrial Group III, Tan Binh UZ, Tan Phu District, HCMC, S.R. Vietnam | (84-28) 3816 0999 | (84-28) 3816 0996

Member of the SGS Group (SGS SA)



Test Report No. VNHL1907012485HG Date: August 23, 2019 Page 2 of 6

Signed for and on behalf of
SGS Vietnam LTD



Wong Cho Wing
Hardline and E&E Lab Manager

This document is issued by the Company subject to its General Conditions of Service printed overleaf, available on request or accessible at <http://www.sgs.com/en/Terms-and-Conditions.aspx> and, for electronic format documents, subject to Terms and Conditions for Electronic Documents at <http://www.sgs.com/en/Terms-and-Conditions/Terms-and-Conditions.aspx>

Attention is drawn to the limitations of liability, indemnification and jurisdiction issues defined therein. Any holder of this document is advised that information contained hereon reflects the Company's findings at the time of its intervention only and within the limits of Client's instructions, if any. The Company's sole responsibility is to its Client and this document does not exonerate parties to a transaction from exercising all their rights and obligations under the transaction documents. This document cannot be reproduced except in full, without prior written approval of the Company. Any unauthorized alteration, forgery or falsification of the content or appearance of this document is unlawful and offenders may be prosecuted to the fullest extent of the law.

Unless otherwise stated the results shown in this test report refer only to the sample(s) tested and such sample(s) are retained for 90 days only.

SGS Vietnam Ltd | Office: 198 Nguyen Thi Minh Khai St, District 3, Ho Chi Minh City, Vietnam | (84-28) 3935 1920 | (84-28) 3935 1921 | www.sgs.com
Lab: Lot III/21, 19/5A St, Industrial Group III, Tan Binh UZ, Tan Phu District, HCMC, S.R. Vietnam | (84-28) 3816 0999 | (84-28) 3816 0996

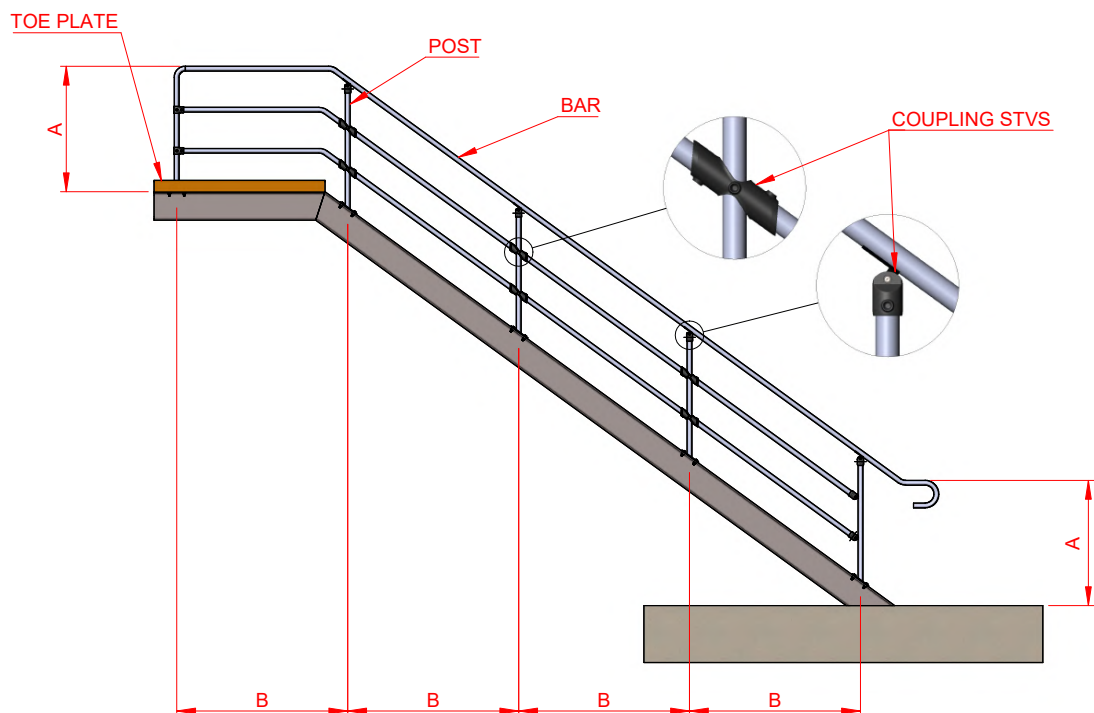
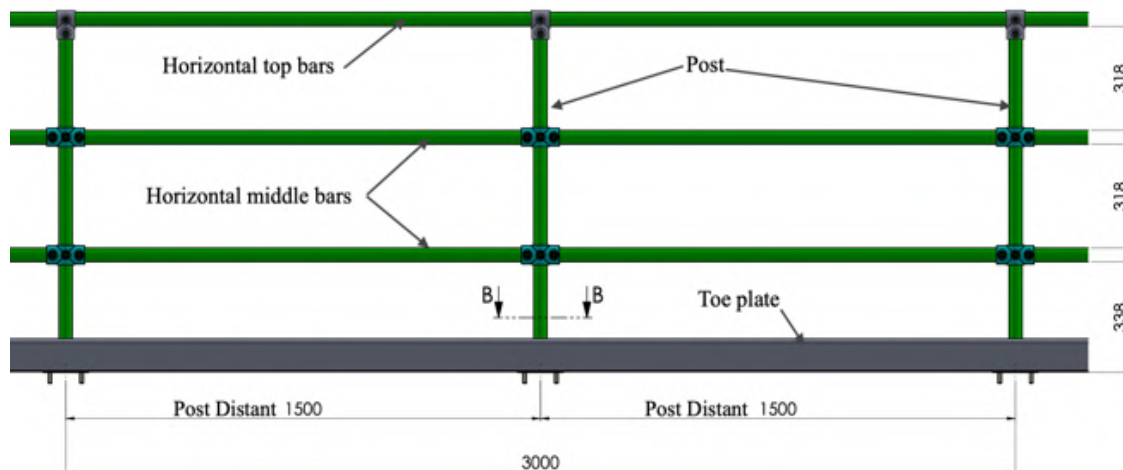
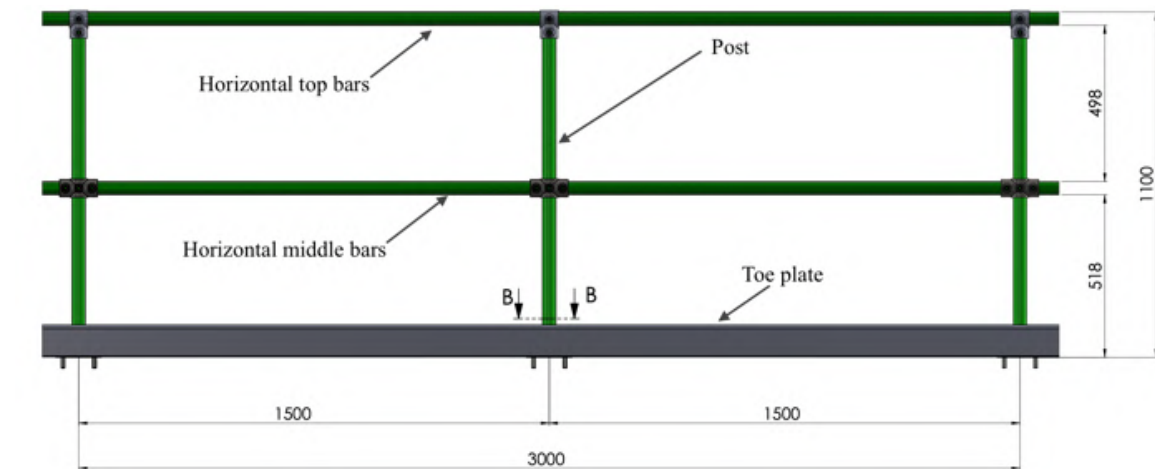
Member of the SGS Group (SGS SA)



MODULAR

Ha Duy Phien St | 700000 Ho Chi Minh City | Vietnam
Hotline: +84 938 770 765 | quyet.le@stvs.co | stvs.co

TECHNICAL SPECIFICATION



Material:

- o Clamp fitting: Duction iron
- o Tube: Steel tube according to ASTM A500 standard

Dimension:

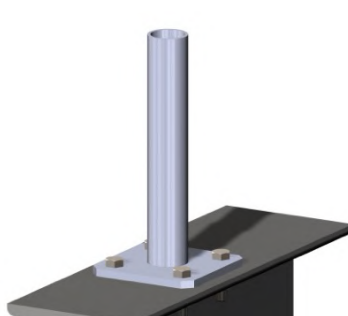
- o Height: 1100mm
- o Post distant: Max 1500mm
- o Post section: D42.2x3.2mm
- o Vertical bar section: D42.2x3.2 mm/ D42.2x2.0mm
- o Flange:
 - Quantity: 1/2/3/4 bars
 - 75x145x8mm
 - 75x180x8 mm (Apply for slope mount)
 - 120x120x8mm
- o Clamp fitting: Average thickness 5mm
- o Clamp locking set screw: M16-12
- o Connection bolts:
 - On steel mount: Bolt set M12-40-8.8
 - On concrete mount: Wedge anchor bolt M12-100
- o Toe plate: Aluminum - 104mm height x 14mm

Finishing options:

- G1: Single layer Polyester powder coating - For indoor, Out door C2, C3 environment
- G1 Plus: Double layer Epoxy primer powder coating + Polyester powder coating.
For out door C4, C5, CX environment
- G2: Hot dip galvanized – For indoor or outdoor environment
- G2 Plus: Hot dip galvanized finishing + Polyester powder coating - Recommend for C5, CX environment

Configuration:**TOP MOUNT 1 (TM1)**

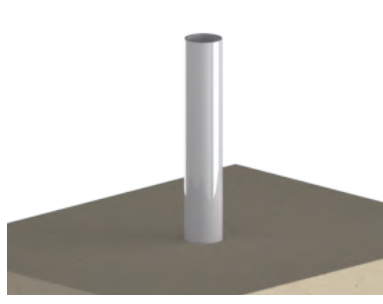
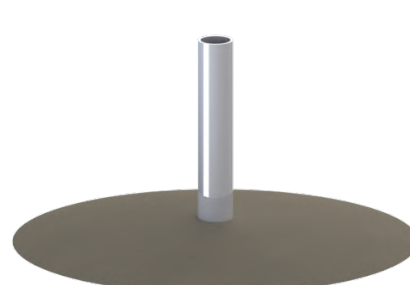
Flange 75x145mm

**TOP MOUNT 2 (TM2)**

Flange 120x120mm

**SIDE MOUNT 1 (SM1)**

Connect to the side

**ANGLE MOUNT 1 (AM1)**Flange 75x145mm to the top
slope mount**BURIED MOUNT 1 (BM1)**Buried in to concrete with the
deep 200mm**BURIED MOUNT 2 (BM2)**Buried in to the ground with
deep 500mm.

BANANA STEM TOE PLATE® SYSTEMS

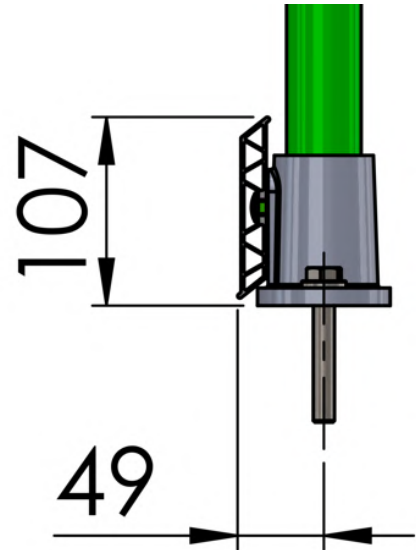
STVS unique aluminum toeplate design. This design follow BS-EN ISO 14122 standard.

Extract: 7.1.7 A toe-plate with a minimum up stand of 100 mm shall be placed 10 mm maximum from the walking level and the edge of the platform.

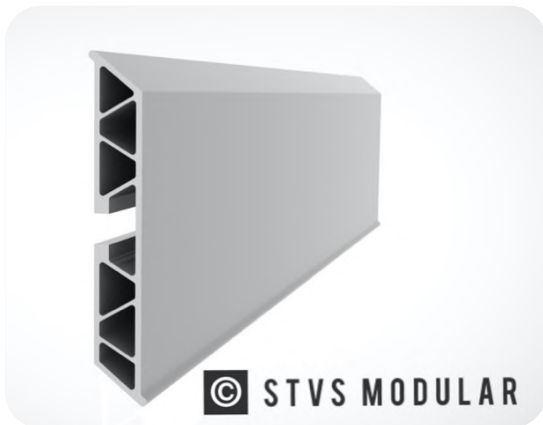
The idea from banana stem structure give super strong toeplate also allows quick and easy installation. No drilling or welding, the structure allows for secure attachment with no exposed fasteners. Banana stem structure provides rigid non-buckling performance with the benefit of light weight, easy handling.

PRODUCT SPECIFICATION:

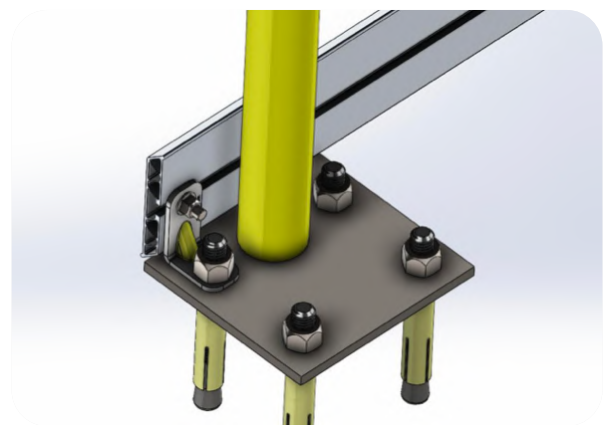
Dimension:	14mm thickness x 102mm height
Material:	Aluminum alloy 6063
Finishing:	Powder coating in silver color (Yellow color available onn request)



DURABLE - STRONGER – LIGHTER – EASY TO INSTALL



Lighter, stronger, much more beautiful and corrosion resistant compare to steel



**Flexible to install at site.
Hot dip galvanized finishing for accesories**